

Sonatina

from "My Next Life As A Villianess"

Kanematsu Shuu
arr. Mark Andrews

Vivace

Measures 1-4 of the piece. The key signature has one flat (B-flat). The time signature is 4/4. Measure 1 features a complex chordal texture in the right hand and a bass line in the left hand. Measure 2 continues the texture. Measure 3 features a sixteenth-note run in the right hand, marked with a '6' and a trill 'tr'. Measure 4 ends with a double bar line and a repeat sign.

Measures 5-7. Measure 5 begins with a sixteenth-note run in the right hand, marked with a '5'. The left hand continues with a steady eighth-note pattern. Measures 6 and 7 continue the melodic and harmonic development.

Measures 8-10. Measure 8 features a half-note melody in the right hand and a bass line in the left hand. Measure 9 continues the melody. Measure 10 features a half-note melody in the right hand and a bass line in the left hand.

Measures 11-13. Measure 11 features a half-note melody in the right hand and a bass line in the left hand. Measure 12 continues the melody. Measure 13 features a half-note melody in the right hand and a bass line in the left hand.

Measures 14-16. Measure 14 features a half-note melody in the right hand and a bass line in the left hand. Measure 15 continues the melody. Measure 16 features a half-note melody in the right hand and a bass line in the left hand.

Measures 17-19. Measure 17 features a half-note melody in the right hand and a bass line in the left hand. Measure 18 continues the melody. Measure 19 features a half-note melody in the right hand and a bass line in the left hand.

Transcription ONLY 2020 Mark Andrews

From gamesheetmusic.com

Support the site with a donation or @ www.patreon.com/RigorMortis999

2

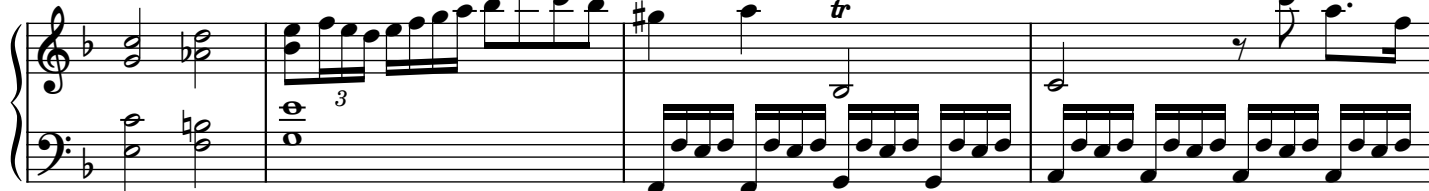
20



23



28



32



35



39



Transcription ONLY 2020 Mark Andrews

From gamesheetmusic.com

Support the site with a donation or @ www.patreon.com/RigorMortis999